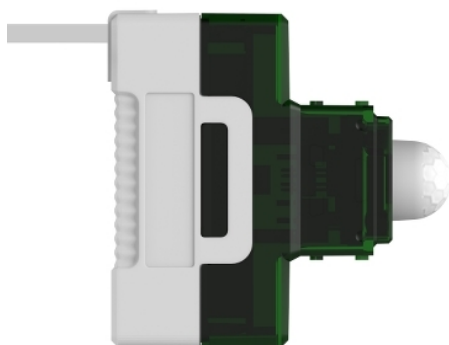


## Product data sheet

### Characteristics

# PDL352MPIR-TN

PDL Iconic, movement detector, PIR, 240 V, Translucent



### Main

Range of product	PDL Iconic
Product brand	PDL
Product or component type	Movement detector
Function of module	Motion detection
Device application	Lighting Power circuit application
Sensor type	PIR

### Complementary

Provided equipment	Carrier (plastic) Finishing accessory
[Ue] rated operational voltage	220/240 V AC 50 Hz 25 °C
Power consumption in W	1 W at 240 V AC
Maximum load current	3 A for per output
Rated power in W	100 W LED lighting 750 W incandescent 100 W fluorescent 400 W LV halogen 100 W motor
Protection type	Input surge protection for sensor
Electrical insulation class	Double insulation
Type of setting	Time adjustment: 20...900 s
Light intensity adjustment	10...2000 lux
Movement detection area	5 m
Detection angle	100° horizontal 82° vertical
Material	Plastic
Device mounting	Wall mounted
Mounting height	1.2 m
Type of installation	Indoor installation

### Environment

IP degree of protection	IP20 (modular enclosure) conforming to IEC 60529
Ambient air temperature for operation	-10...50 °C
Ambient air temperature for storage	-20...60 °C
Relative humidity	5...90 % non-condensing
Standards	AS/NZS 60669.2.1

Offer Sustainability

REACH free of SVHC	Yes
EU RoHS Directive	Compliant <a href="#">EU RoHS Declaration</a>
Toxic heavy metal free	Yes
Mercury free	Yes
RoHS exemption information	<a href="#">Yes</a>
China RoHS Regulation	<a href="#">China RoHS Declaration</a>