

Widget

Introducing Link's latest distribution solution, WidgetLink. Acting as "Swiss knives" for CAT5/6 cables, allows the standard Cat 5 and Cat 6 cabling to send multiple signals down a single cable thanks to a small range of Break-In, Break-out and adapters. The use of Cat 5/6 cable can be applied to DMX, Analog Audio, Balanced AES3 Digital Audio, and even hybrid combinations including 10/100 Ethernet.

1, 2, 3, or even 4 discrete signals can be sent down each individual Cat 5/6 cable. Shielded cable is required for applications using phantom power, 4 discrete signals, and/or hybrid combinations.

Thanks to its low loss characteristics, Cat 5/6 can increase the maximum length in many applications. For example, balanced AES3 signals have a typical distance limit of 100 meters on standard 110 ohm twisted-pair type cable, but can travel up to 300 meters on Cat5/6 cable, depending on the equipment being used. In a hybrid configuration, the maximum distance is dictated by the IEEE 802.3u Fast Ethernet standard. For DMX over Cat5/6 cable, distances of over 500 meters are possible, depending on equipment.

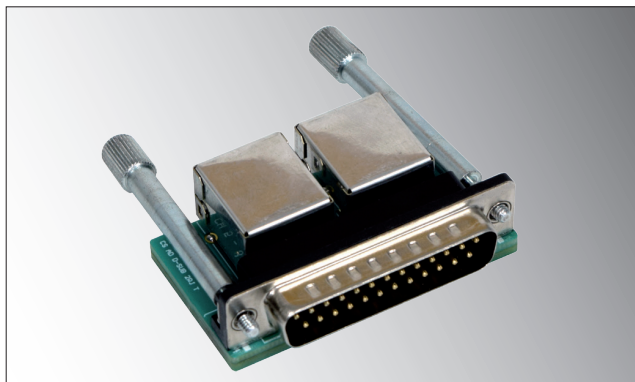
Link's **eurocable** brand is guaranteed to provide dependable signal integrity using our WidgetLink products, particularly when paired with our CVS LK CAT6A STP cable. Other hybrid solutions are also offered with various cable configurations. For example, our CVS LK 1CAT6SF 12/3 cable, which features a 12 AWG / 3 conductor power line with a shielded Cat 6 cable for "driveline" type applications.

- Multiple signals down a single Cat5/6 Cable
- Supports DMX, Analog Audio, and AES Digital Audio
- Hybrid solutions available including 10/100 Ethernet
- 4 total channels if using shielded cable
- "Fan," "barrel," and stage box type configurations
- Custom configurations available

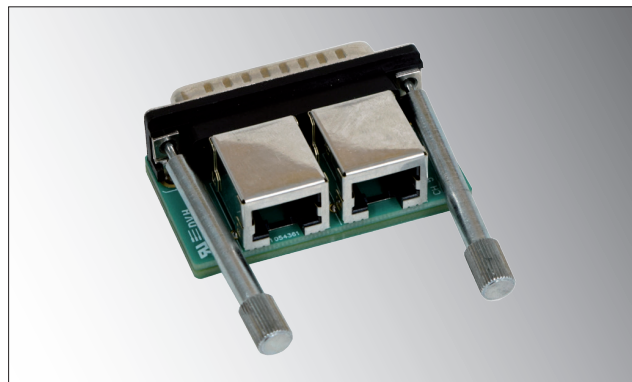


Widget PCBs

The DB25 widget is an extremely cost-effective solution for break-ins and break-outs to XLR and even extensions using standard shielded Cat cables.



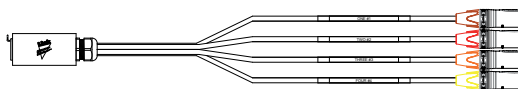
DB25 PCB front



DB25 PCB rear

Widget

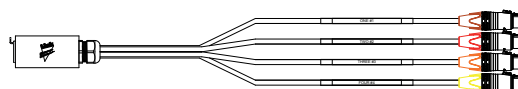
Barrel to Male



WDO CAT4XLR3B6

- 3 Pin - Audio
- WDI CAT4DMX5B6
- 5 Pin - DMX

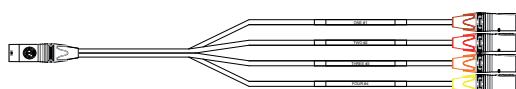
Barrel to Female



WDI CAT4XLR3B6

- 3 Pin - Audio
- WDO CAT4DMX5B6
- 5 Pin - DMX

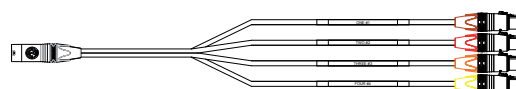
etherCON to Male



WEO CAT4XLR3B6

- 3 Pin - Audio
- WEI CAT4DMX5B6
- 5 Pin - DMX

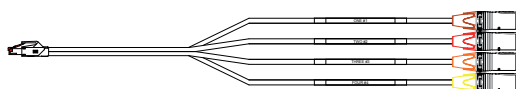
etherCON to Female



WEI CAT4XLR3B6

- 3 Pin - Audio
- WEO CAT4DMX5B6
- 5 Pin - DMX

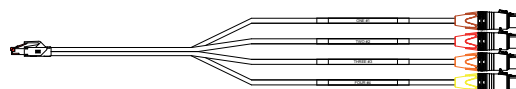
RJ45 to Male



WRO CAT4XLR3B6

- 3 Pin - Audio
- WRI CAT4DMX5B6
- 5 Pin - DMX

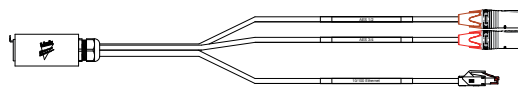
RJ45 to Female



WRI CAT4XLR3B6

- 3 Pin - Audio
- WRO CAT4DMX5B6
- 5 Pin - DMX

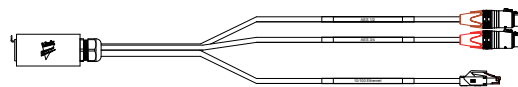
Barrel to Male with Mega



WDO VDRIVE R6

- Allows for two audio or DMX signals with 100BASE-TX Megabit ethernet

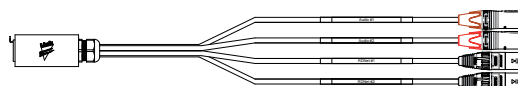
Barrel to Female with Mega



WDI VDRIVE R6

- Allows for two audio or DMX signals with 100BASE-TX Megabit ethernet

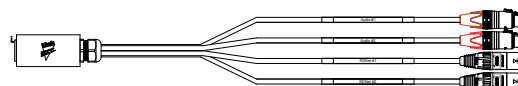
Barrel to Male with Control



WDO RDNET E6

- Allows for two audio signals and two serial control signals for powered speaker systems

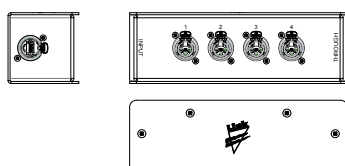
Barrel to Female with Control



WDI RDNET E6

- Allows for two audio signals and two serial control signals for powered speaker systems

Stage Box



Hybrid Stage Box

