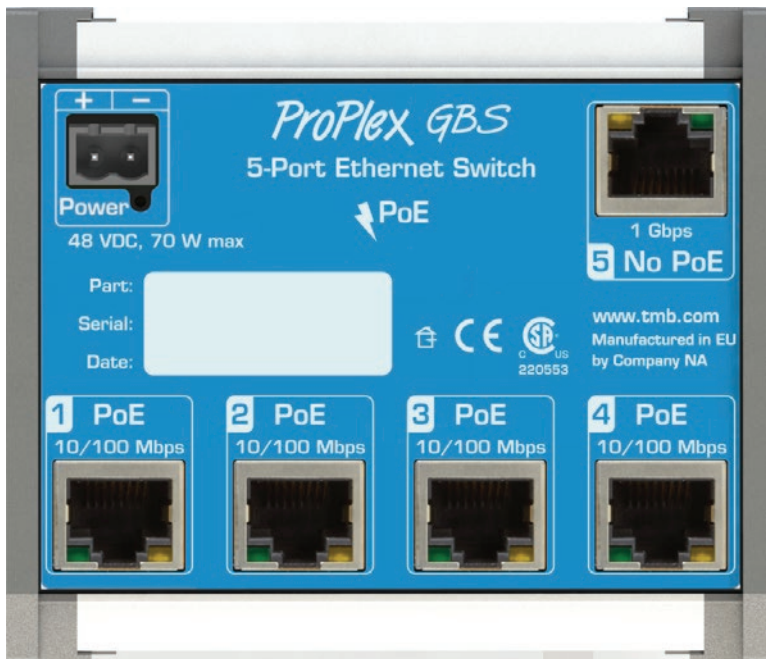


**The Leader in Touring Technology, Now Coming to a Building Near You!**



**Professional quality switch  
suitable for multicast, video,  
audio, or lighting data.**

- One Gigabit port, four 100 Mbps PoE ports
- Overall 60W PoE power budget, 15W per output, 48 VDC
- Compatible with a wide range of entertainment-specific protocols, including sACN, ArtNet, CobraNet, ETCNet, Ethersound, and MA-Net
- Powerful and compact, for network applications of all kinds
- Complete range of DIN Rail Devices and Drives to make a complete system!



## Worldwide Exclusive Distribution

Los Angeles  
+1 818.899.8818

London  
+44 (0)20.8574.9700

New York  
+1 201.896.8600

**tmb**  
www.tmb.com

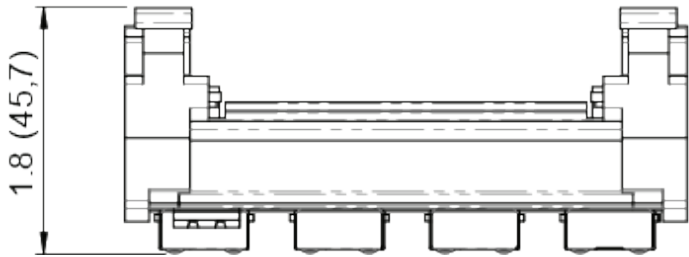
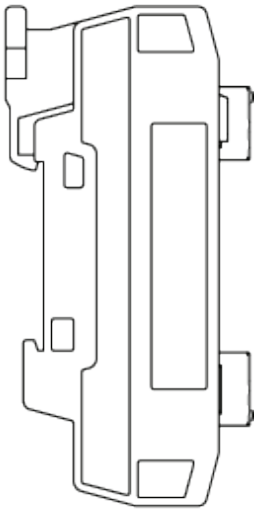
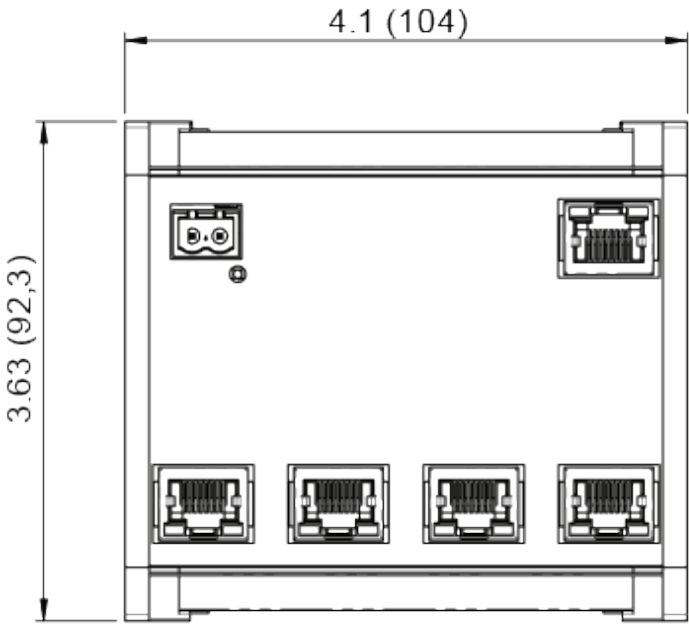
Toronto  
+1 519.538.0888

Beijing  
+86 10.8492.1587

Riga  
+37 16.868.8955

Specifications	
Part Number	PPGBSPOEDIN005
Number of Ports	5
Operating Voltage	48 VDC (Requires external power supply)
Power Consumption	70 W (10 W switch + 60 W PoE if used)
PoE Output Power	60 W max.
Power Input	Pluggable Terminal Block (PTB) 2-terminal <sup>1</sup>
Ethernet ports	4x 10-100 Mbps PoE (IEEE 802.3af compliant) RJ45
	1x 1 Gbps RJ45
Dimensions (HxWxD)	1.8 x 4.1 x 3.63 in [45.7 x 104 x 92.3 mm]
Weight	5.6 oz [159 g]

<sup>1</sup> Included



Dimension in Inches (millimeters)