

## 2 DMX Universes that go anywhere! Big power in a small package!

The IQ Micro 2-universe, 2-port bidirectional Ethernet-DMX node packs a lot of merging/converting power in a small package! Convert between Ethernet and 2 universes of DMX. Neutrik connectors are featured and large navigation buttons with easy-to-read LCD makes programming simple, easy, and quick. The handy Mounting Plate and Strap make installation effortless and the extremely compact unit will fit anywhere. ProPlex IQ products are rugged, intuitive, and quick to configure. Powered by PoE, the IQ Micro is fully RDM functional and interfaces with ProPlex Software!



- Bidirectional, 2-universe, 2-port merging and Ethernet protocol conversion of DMX data (sACN/ArtNet)
- Rugged, extremely compact Micro enclosure with optional mounting plate and strap installs almost anywhere
- Intuitive, simple web interface or front panel control of all basic functions
- RDM functionality for complete system feedback and monitoring
- All Neutrik connectors: XLR and EtherCon

## BUILT TO LAST!

*ProPlex* - DATA DISTRIBUTION YOU CAN DEPEND ON



Worldwide Exclusive Distribution

[sales@tmb.com](mailto:sales@tmb.com)

Los Angeles  
+1 818.899.8818

London  
+44 (0)20.8574.9700

**tmb**  
[www.tmb.com](http://www.tmb.com)

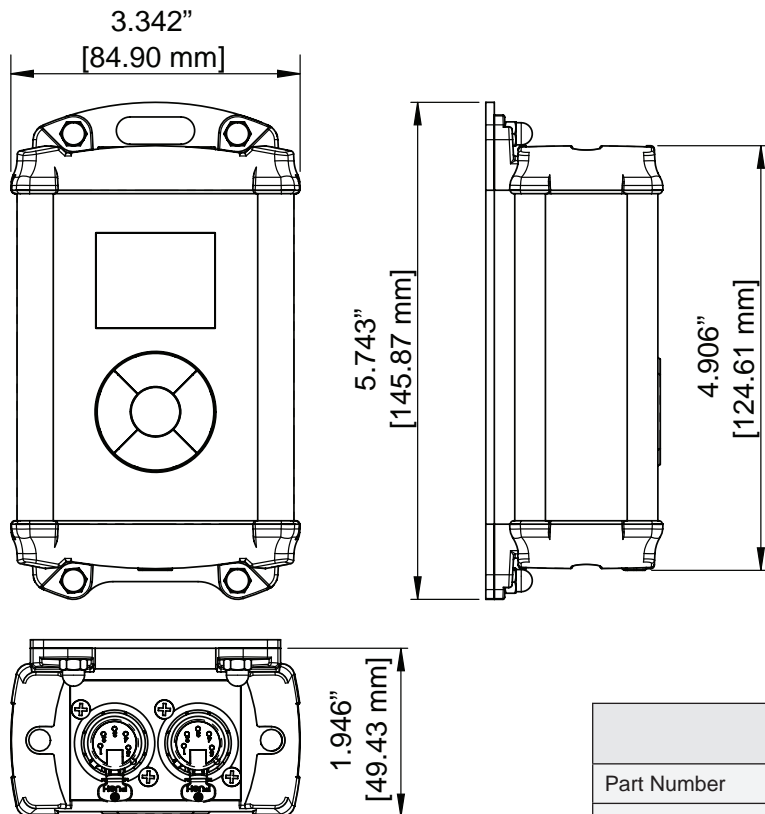
New York  
+1 201.896.8600

Beijing  
+86 10.8492.1587

Toronto  
+1 519.538.0888

# ProPlex® IQ

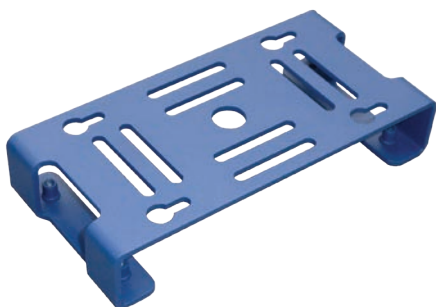
## IQ Micro Ethernet-DMX Node



IQ Micro's easy-to-use mounting strap (included) fastens to truss and nearly anywhere else!



Includes Plate for attachment of Mounting Strap (included) and safety cable



Optional Clamp Plate for clamp or coupler or for wall mounting

### Technical Specifications

Part Number	PPIQC215MCD
Ethernet Ports	1
DMX Ports	2
DMX Connectors	Neutrik XLR5 Female (NC5FAV)
DMX Port Isolation	Optical, up to 1000 V
Ethernet Connector	Neutrik EtherCON RJ45
Ethernet Type	10/100 Base-T
Network Protocols	ArtNet, sACN (E1.31)
Additional Features	RDM; HTP merging; easy priority; sACN priority
Power	24/48 VDC (PoE In)
Power Consumption	2.5 W
Cooling	Convection
Operating Temp.	-20 to +40 °C
Operating Humidity	10-85%
Unit Dimensions w/Plate (WxHxD)	5.7 x 3.34 x 2 in (146 x 84.9 x 51 mm)
Unit Dimensions w/o Plate (WxHxD)	4.9 x 3.34 x 1.875 in (124.6 x 84.9 x 47.6 mm)
Unit Weight w/plate (unpacked)	1.05 lb (0.48 kg)
Packed Dimensions (WxHxD)	8.5 x 5.5 x 4 in (215.9 x 139.7 x 101.6)
Shipping Weight	1.35 lb (0.6 kg)
Accessories	PPIQSBP - IQ Micro backing plate (included) PPIQCS - Mounting Strap (included) SAF1/8X25B - 25" Safety Cable (optional) PPIQCBP - IQ Micro clamp plate (optional)