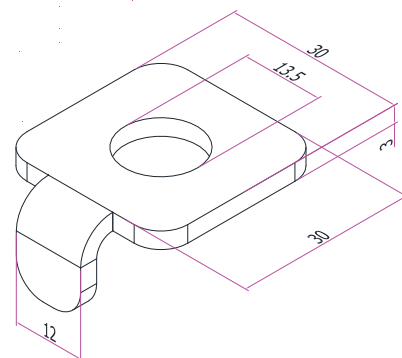


EQUIPMENT ENGINEERED FOR ENTERTAINMENT

# Wall Bracket

## 500 mm

**\*UPDATED FOR 2023\***



### Technical Details

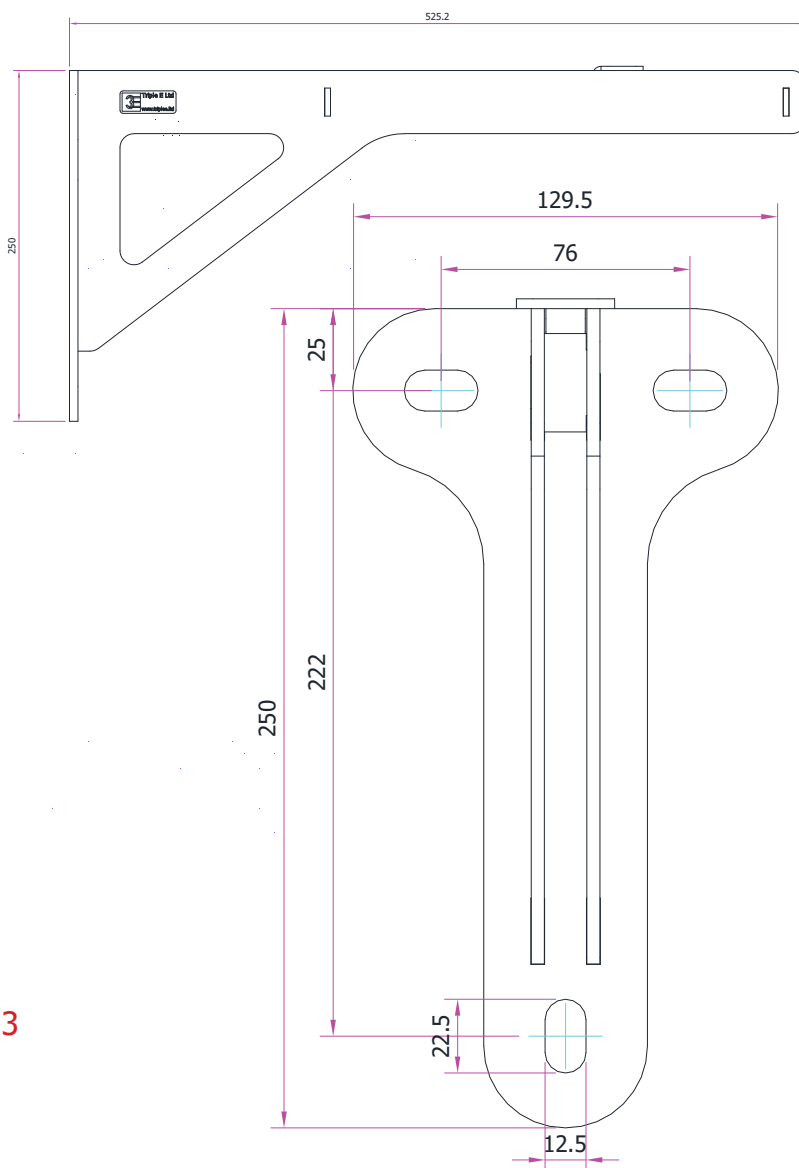
Part No: TRA1602

WLL: 40 kg  
Weight: 3 kg

Materials: Mild Steel S275  
Finish: Powder Coating

2022 Update: the back plate has been widened to a 3 hole system to allow for better site fixings.  
Comes with a newly designed washer for better security and prevention of slippage in suspension with M8 and M12 studding.

Other Sizes Also Available.



Telephone: +44 (0) 1959 570 333  
Email: [info@triplee.ltd](mailto:info@triplee.ltd)  
Visit: [www.triplee.ltd](http://www.triplee.ltd)