

Xlift⁴

XLF-500

500kg | 7m

FRONT LOAD LIFT



Code	LT LIX70-500
Maximum Load	500 kg (1102 lbs) structural mode: 1200 kg (2646 lbs)
Minimum Load	25 kg (55 lbs)
Maximum Height	7 m (23')
Folded Height	1.90 m (6,23')
Work Surface	2,34 x 2.25 m (7.7' x 7.4')
Unit Weight	223 kg (492 lbs)
Winch	1200 kg
Security	Xlift Automatic Trigger



CERTIFICATIONS: **BGV C1 (GUV-VC1) - CE 2006/42/CE** 

The information contained in this document may be subject to changes. Please consult our website to download the latest version.

Area Four Industries Italia S.R.L. | Via Martin Luther King 70, Casale sul Sile (TV) - 31032, Italy
Tel.: +39 0422997300 Fax.: +39 0422997399 | info@a4industries.it



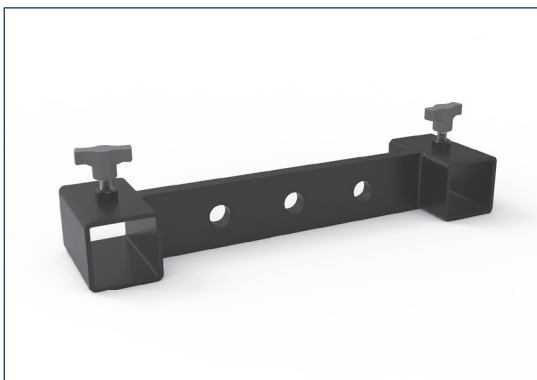
PS-1TR

Code	FEATURES
LT LIXPS-1TR	U piece for longitudinal load



PS-2TR

Code	FEATURES
LT LIXPS-2TR	U piece for transverse load



FAS-01

Code	FEATURES
LT LIXFAS-01	Special support to lift PA systems with the forks