

The background of the slide features a dark blue field filled with numerous thin, glowing blue lines that represent fiber optic cables. These lines are scattered across the frame, with many of them terminating in small, bright white circular dots, creating a sense of depth and connectivity.

OPTIlink

**Providing innovative
fiber cabling solution!**

LK
connectors

Fast Termination Connectors

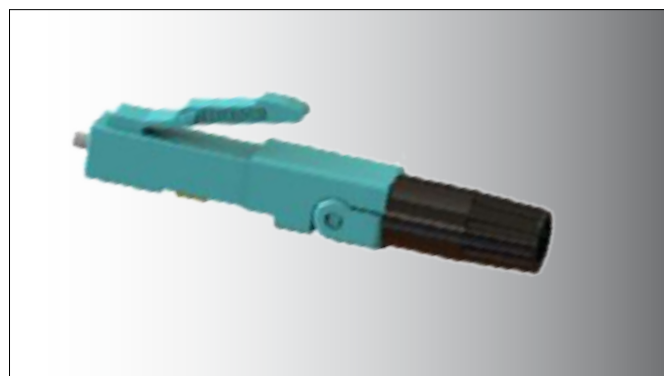
Features and benefits:

- Termination in one minute
- Compatible with 250 μ m, 900 μ m, 2.0mm, and 3.0mm jacket
- No crimping or proprietary tooling required
- Confirmation window for easy verification
- Easy fiber insertion
- Industry leading hinge clamp strain relief
- Up to 4 wiring operations

Specifications		
Insertion loss	Multimode	Typical ≤ 0.3 / MAX 0.5
	Singlemode	Typical ≤ 0.3 / MAX 0.5
	Singlemode APC	Typical ≤ 0.3 / MAX 0.6
Return loss	≥ 26 dB (FPC)	≥ 45 dB (UPC) ≥ 55 dB (APC)



SC connector



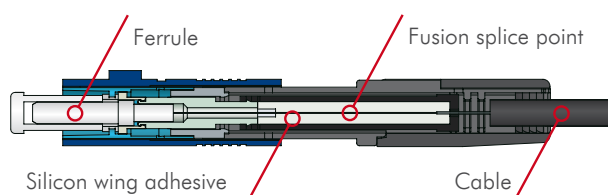
LC connector

Splice-On Connectors

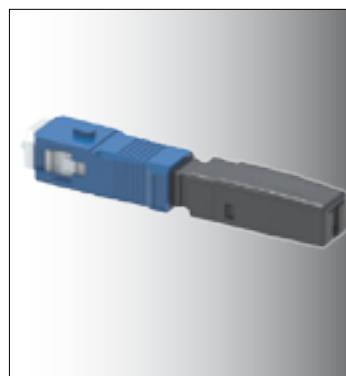
Features and benefits:

- Field-installable
- Low insertion/High return loss
- No heating process required
- Wing-adhesive quick protection
- Fast work time
- Termination time: 12 seconds

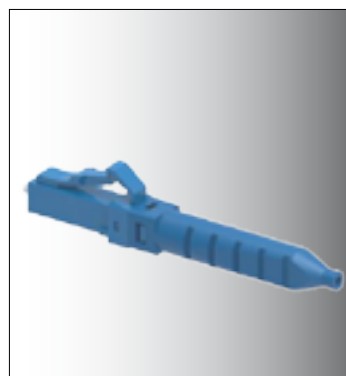
Item	Description
Connector type	SC/LC
Jacket type	900 μ m, 2mm, 3mm, 3mm Drop round, 2x3 Drop rectangular
Polish	APC or UPC
Insertion loss	SM < 0.1 dB / MM < 0.1 dB
Return loss	SM > 60 dB (APC), > 55 dB (UPC) / MM > 30 dB (UPC)
Operating temp.	-40°C to 75°C



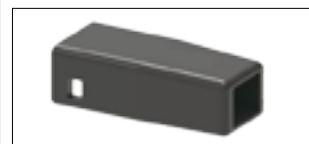
Booth type



SC connector



LC connector



Hard boot



Screw boot



Soft boot

Ask for **eurocable** unbreakable Optical cables CVS LKFOHD range

Splicer

Features and benefits:

- Optimized for: Single core, less than 0.1 dB loss; Dual core, less than 0.2 dB loss.
- No heating-process required
- Wing-adhesive protection
- Micro 5pin port charging, chargeable with power bank or phone charger
- Minimized size

Item	Description	
Connector type	Single core	Dual core
Jacket type	Single-mode (G.652&G.657), Multi-mode (G.651), DSF (G.653), NZDS (G.655)	
Fiber cleave length	9 ~ 10mm	10mm
Typical average splice loss	0.1 dB or less	0.2 dB or less
Splicing time	10 sec	12 sec
Viewing method	1 axis CMOS camera	
Operating condition	Altitude: 0 to 3660m, -10°C to 50°C / Humidity: 0 to 95% RH, non-dew	
Protection method of fusion-spliced point	Wing-adhesive protection	Wing-adhesive protection, heating sleeve (optional)
Splicing cycle of battery	100 cycles with internal battery, chargeable by portable power bank	
	Installed battery by Micro 5 pin USB port (phone charger)	
	2000 splices	
	110(W)x115(L)x60(H) mm / 0.65kg	



Splicer single core



Splicer dual core

Tools



High Precision Fiber Optic **Cleaver**

Designed for excellent portability, the Fiber Optic Cleaver is well-shaped and high Performance.

This high precision fiber optic cleaver is professional designed in structures, its blade provides approximately 40,000 cleaves. High precision fiber optic cleaver is ideal for fusion splicing standard 125/250um & 125/900um fibers and preparing fiber for various pre-polished field-installation connectors.



Pen Shape **Visual Fault Locator** is a compact but powerful fiber optical cable test tool, with an output power up to 10mW, which can be used to locate sharp bends & breaks in jacketed or bare fiber more than 10km. It can also be applied to identify the connectors in patch panels and identify the fibers during splicing operation. The choice of a continuous wave output mode for steady fault illumination or a flashing output mode makes for easier fault location.



Microscope display



Display with data save function (SD card)



Microscope Probe



Inspection Wifi converter
(for iOS & Android)



Microscope display with power meter

Portable, video microscope used to inspect all kinds of fiber optic terminations, allows the inspection without removing the connector from the female adapter. Fast and easy to use, particularly usefull working "on field".

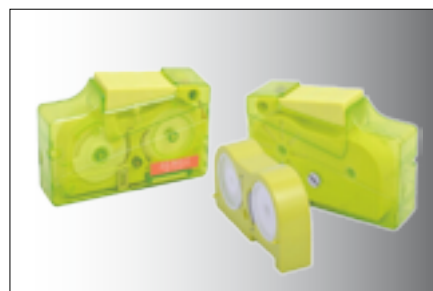
Build your own set tool combining the Microscope Probe with the various accessories available!



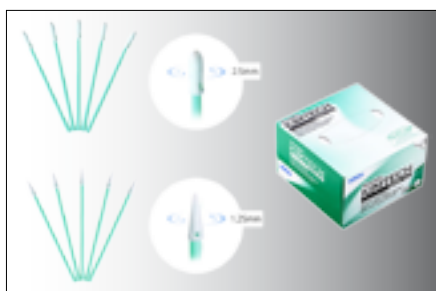
Fiber Optic **Cleaner Pen** for LC, SC, MPO/MPT and LEMO connectors.



Cassette cleaner for LC, SC, FC and ST connectors and replacement tape.



Cassette cleaner for LC, SC, FC and ST connectors and replacement tape.



Fiber Optic **Swabs**, for cleaning contaminations from all 1.25/2.5mm adapters and connectors leaving no area unattended.

Handy one-at-a-time dispensing **wipes** packs with special plastic guard to reduce airborne lint, keep contaminants out of box and reduce electrostatic discharge.



Fiber Optic **Kevlar Cutter**, made of high quality carbon steel to cut the kevlar fibers.



Fiber Optic **Stripper**, to provide a quick, easy, and reliable way to remove the fiber jackets from an optical fiber.