

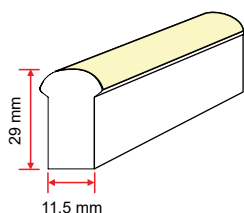


FloppyFlex Digital

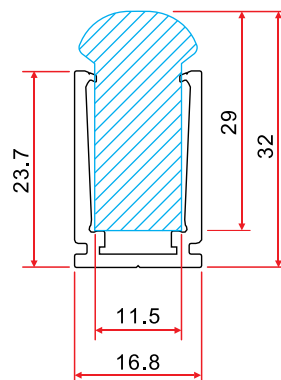
RGBW / Large / 270° / Side-to-Side (STS) Bend

FloppyFlex Digital Large RGBW is a flexible 24V LED Neon with DMX multi-pixel control for advanced chasing, programmable scenes, and animated visual effects. It is cULus Listed, CE, TUV and RoHS compliant and passes rigorous environmental, optical, mechanical, and electrical testing. When configured with patented FloppyFlex IP68 Double-Molded connections, it is ideal for submersible applications. Featuring a rich, vibrant and unlimited colour palette, with a pixel size of 125 mm, its visible beam angle is 270°. The minimum side-to-side bend diameter is 120 mm. Black base is standard, white and custom colours available.

Dimensions

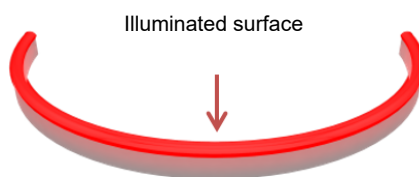


Base + Illuminated surface



Dimensions in mm
w/standard locking U-channel
(other mounting options available)

Bending



Minimum Side-to-Side bend diameter is 120 mm



Exclusive Distribution – The Americas, Europe, and Asia

Innovative, Performance-Driven Show Technology Since 1983

tmb.com

Los Angeles
+1 818-899-8818

London
+44 (0)20-8574-9700

New York
+1 201-896-8600

Beijing
+86 10-8492-1587

Toronto
+1 519-538-0888



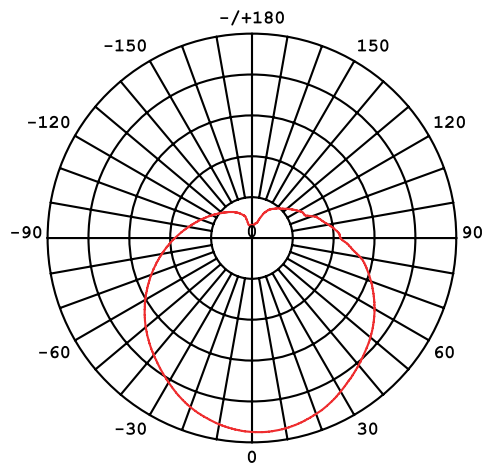
Specifications

Part Number	FFLDRGBWB
Colour	RGBW (W = 2700K)
Beam Angle	270°
Max. Continuous Length	10 m (32.8')
Minimum Bend Diameter	120 mm Side-to-Side
Power Consumption	15 W/m
Luminous Flux	110 lm/m (33.5 lm/ft)
Cut & Connect Joints	Located every 125 mm (4.9")
Housing	UV coated, flexible PVC jacket + silicone top, aluminum mounting hardware
Installation Temperature	-20 to 45 °C (-4 to 113 °F)
Operating Temperature	0 to 45 °C (32 to 113 °F)
Operating Voltage	24 VDC
Lumen Maintenance	L70 @ 50,000 Hours (25 °C)
Control	DMX-512, 4 channels per pixel, 8 pixels per metre (7 LEDs/pixel)
Wiring	3-Wire
Connectors & Hardware	Connector and mounting options sold separately
Ingress Protection	IP67, IP40, IP68 available by special order
Impact Resistance	IK 08, Up 5 Joule impact energy protection
Warranty	3 Years
Weight	490 g/m (0.33 lb/ft)
Dimensions (WxHxD)	11.5 mm x 29 mm x variable (0.45" x 1.14" x variable) tolerance +/- 0.3 mm

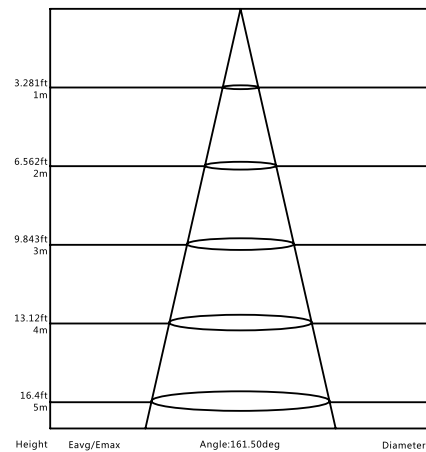
Black base standard. White and custom colours available by special order.

Photometrics

Candlepower Distribution

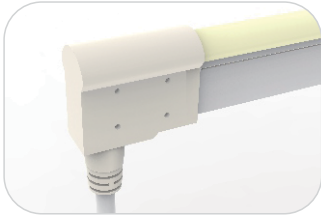


Illuminance Characteristics



Double-Molded Connections

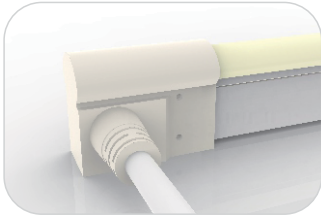
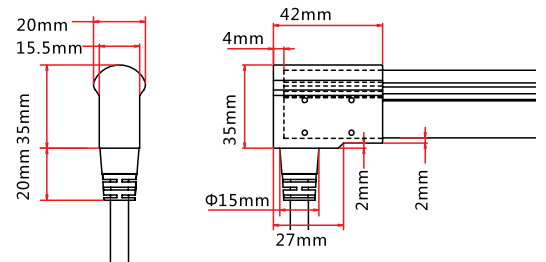
Factory Terminated / IP68



Double-Molded Front Connection (bottom)

Connects FloppyFlex to power supply with pre-installed bottom feed cable, IP68.

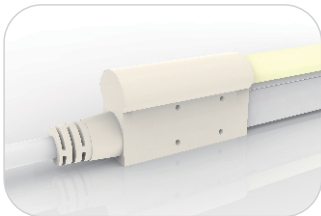
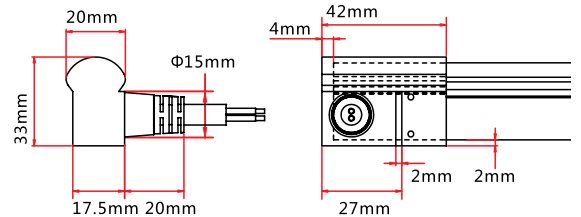
Cable length available in 0.3 m, 1 m, 3 m, 5 m, 10 m.



Double-Molded Front Connection (side)

Connects FloppyFlex to power supply with pre-installed side feed cable, IP68.

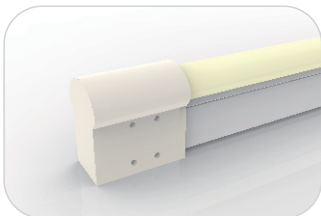
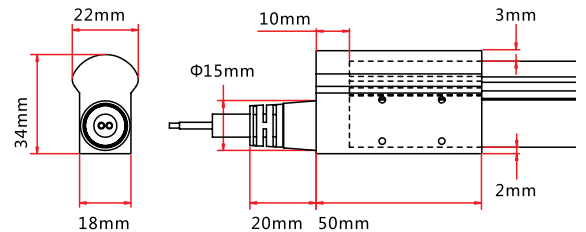
Cable length available in 0.3 m, 1 m, 3 m, 5 m, 10 m.



Double-Molded Front Connection (end)

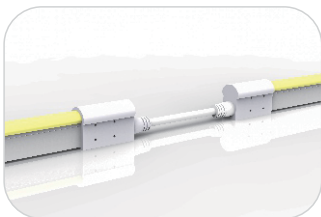
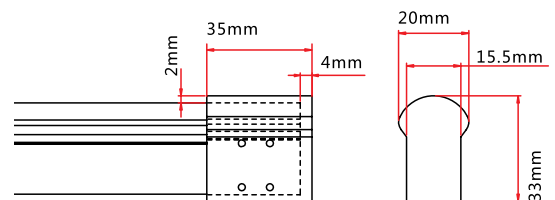
Connects FloppyFlex to power supply with pre-installed end feed cable, IP68.

Cable length available in 0.3 m, 1 m, 3 m, 5 m, 10 m.



Double-Molded End Cap

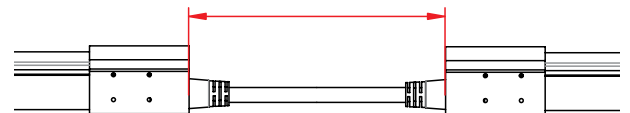
Pre-installed termination protection of FloppyFlex, IP68.



Double-Molded Jumper Cable

Connects two pieces of FloppyFlex together with a flexible cable, IP68.
Available lengths: 0.3-1 m.

Maximum 4 Jumpers per 10 m



Double-Molded T-Adapter Cable

Connects two pieces of FloppyFlex together with a T-joint, energized from middle, IP68.

L1 and L2 available in 0.15-0.5 m. L3 available in 0.3-3 m.

Maximum 4 Jumpers per 10 m

