

LKS 19 Pin

The LKS range has been designed for professional lighting and power distribution applications. While maintaining full compatibility with Socapex SL 419 series, LKS connectors represent a significant breakthrough in reliability and safety. Based on the LK Series MIL-SPEC designs, these connectors are extremely robust, IP rated and available with impact resistant rubber locking rings.



UL-CSA

The highest UL-CSA Rating obtained with a rubber insert: UL Recognized for 25A of continuous current (20A CNR). The exclusive rubber silk-screened insert provides for easy and secure pin insertion while maintaining the highest continuous current ratings.

The gold plated contacts with retaining spring pins ensure reliable mating every time.

The **LKS** connectors range represents a real breakthrough in terms of reliability and safety.

- Screw coupling connector
- Fully compatible with Socapex SL 419 series
- Ground first contact
- Gold plated machined pins accepting conductors from 1.5 to 4 mm²
- Dual ground rings
- Plastic insulating sleeve
- Body ground fulfilling UL & NEC requirements
- IP67 rated when mated
- Interchangeable locking rings
- Wide range of cable strain reliefs
- Anti spinning system

Options

- Tulip/retention spring pins
- Long backshell (standard in Spider version)
- Integrated locking ring set screw (standard in Spider version)
- Black and colored (blue, red, green, yellow) rubber locking rings
- Male and female connector dust caps
- Fast LinkLock backshell



FAST LINKLOCK BACKSHELL

Secure locks and quickly unlocks with a 1/4 turn every time, time after time. Only available in machined version.



LOCKING SET SCREW

With a captive Helicoil retention system guarantees connector integrity in the harshest touring applications.



LKS 19 PIN SPIDER

The LKS 19 pin spider connector maintains the width of the PG29 and guarantees secure fan out terminations with a highly resistant strain relief.



ANTI-SPINNING SYSTEM

A new internal head design incorporating an innovative keying solution ensures that rubber inserts are secured and will not spin.

LKS 19 Pin

LKS Ordering Code

Version		LKS	D	LMS	PA	M29	B	1		Special Version	
Die cast aluminium	D									No special version	
Machined aluminium	M									PCB common ground	CG
Connector Type											
Cable male solder	LMS										
Cable male crimp	LMC										
Cable female solder retention tulip	LFSR										
Cable female solder tulip	LFST										
Cable female crimp retention tulip	LFCR										
Cable female crimp tulip	LFCT										
Panel male solder	PMS										
Panel male crimp	PMC										
Panel female solder retention tulip	PFSR										
Panel female solder tulip	PFST										
Panel female crimp retention tulip	PFCSR										
Panel female crimp tulip	PFCT										

Items subject to Minimum Order Qty

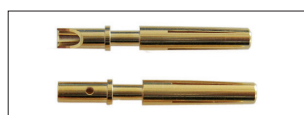
*

B	R	G	Y	GR
Blue	Red	Green	Yellow	Grey

**

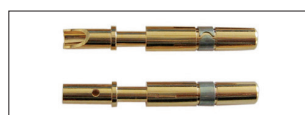
B	R	G	Y	S
Blue	Red	Green	Yellow	Silver

New 1/4 turn lock shell/backshell available on request



Tulip Pins

The conventional 4 blade tulip style provides ample contact surface area for maximum conduction.

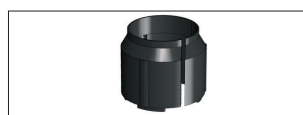


Retention Spring Pins

The enhanced spring pin provides the maximum surface area of a conventional tulip pin with the added benefit of a stainless steel spring clip.

Grounding PCB

Grounding PCB ensures a safe and reliable connection to all pins.



Serviceable Plastic Insulating Sleeve

Easily installed or removed once terminations are completed. They provide a reliable insulation between the connector housing and internal conductors.



Durable Backshell

Available in two lengths for ultimate serviceability.



The anodized aluminium version is available in multiple colors (see color table above).

Accessories

Dust cap



Ground ring



Rubber locking ring



Robust strain relief



For connectors:

LKS 19 TPM

with locking ring

LKS 19 TPF

without locking ring

LKS GD A

Enables the equipotential connection of the 7 ground contacts.

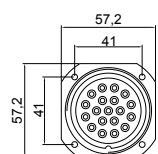
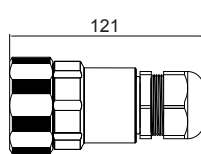
LKS 32 RA*

For LKS

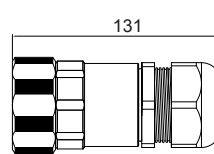
Items subject to Minimum Order Qty

*

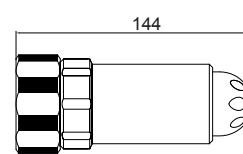
B	R	G	Y	GR
Blue	Red	Green	Yellow	Grey

LKS 19
19 pins size 12

LKS with PG29 backshell



LKS with PG36 backshell



LKS 19 Spider