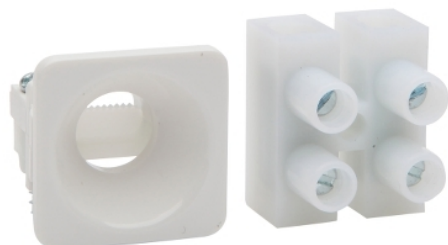


# Product data sheet

## Characteristics

# PDL651M2WH

## Permanent Connection Module (PCU) 600 Series - 240 V - 16 A - White



### Main

Range of product	600 Series
Product or component type	Socket

### Complementary

Material	PC (polycarbonate)
Colour tint	White
Surface finish	Gloss
Installation direction	Vertical
Length	23 mm
Width	23 mm
[Ue] rated operational voltage	230/240 V
Network frequency	50 Hz
Motor M-rating AS3133	M60
Network number of phases	1 phase
Number of gangs	1 gang
Number of poles	1
Mounting mode	Front
IP degree of protection	IP56
Ambient air temperature for operation	-10...40 °C
Connections - terminals	Screw terminal
Quantity per set	Set of 20
Type of packing	Carton

### Offer Sustainability

EU RoHS Directive	Will be compliant – Date to be confirmed
Environmental Disclosure	 <a href="#">Product Environmental Profile</a>